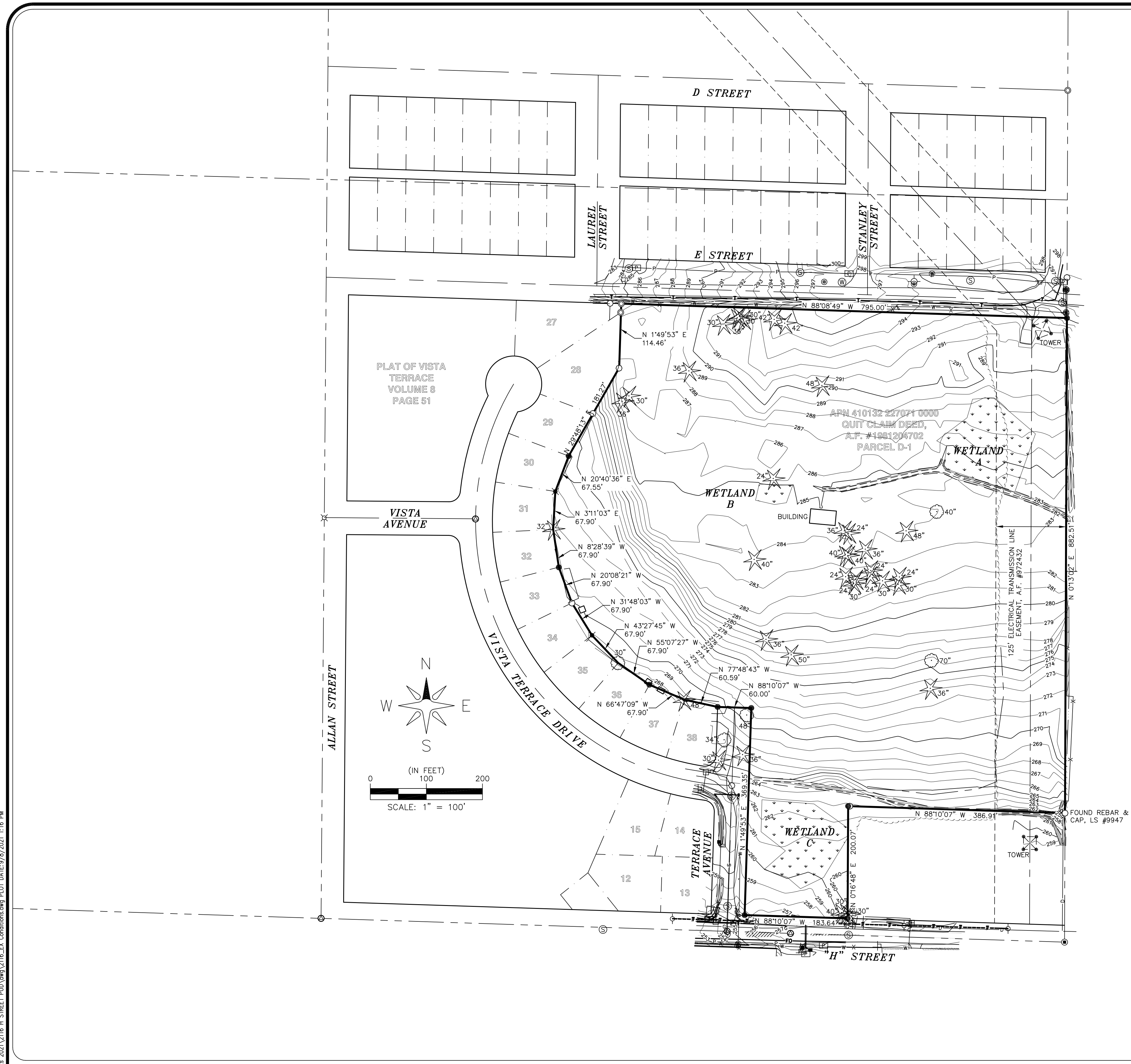


R:\Common\Land Projects 2021\2116 H STREET PUD\DWG\2116-EX Conditions.dwg PLOT DATE: 9/8/2021 1:16 PM



SURVEYORS NOTES:

1. DATA FOR THIS SURVEY WAS GATHERED BY FIELD TRAVERSE UTILIZING ELECTRONIC DATA COLLECTION IN AUGUST, 2021.
2. EQUIPMENT USED: LEICA MS60: 00'01" ±1 MM, ±1.5 PPM.
3. RELATIVE ACCURACY AND FIELD TRAVERSE CLOSURE EXCEEDS THE REQUIREMENTS OF WAC 332-130-085 AND WAC 332-130-090.
4. HORIZONTAL DATUM: XX
VERTICAL DATUM: XX
5. PURPOSE OF SURVEY: TOPOGRAPHIC AS-BUILT SURVEY.
6. CONTOUR INTERVALS ARE 1 FOOT AND ARE COMPUTER GENERATED FROM GROUND FIELD TOPOGRAPHY GATHERED FOR THIS SURVEY UTILIZING ELECTRONIC DATA COLLECTION.
7. ELEVATION ACCURACY OF SURVEYED POINTS AND DIGITAL TERRAIN MODELS EXCEEDS THE STANDARDS PUT FORTH BY THE US ARMY CORPS OF ENGINEERS FOR CONSTRUCTION LAYOUT: 0.10 FEET IN ELEVATION MULTIPLIED BY THE DISTANCE FROM BENCHMARK TRAVERSED IN MILES, SQUARE-ROOTED, AND FOR WELL-DEFINED POINTS IN THE DIGITAL TERRAIN MODEL, PLUS OR MINUS HALF THE CONTOUR INTERVAL (0.5 FEET).

LEGAL DESCRIPTION

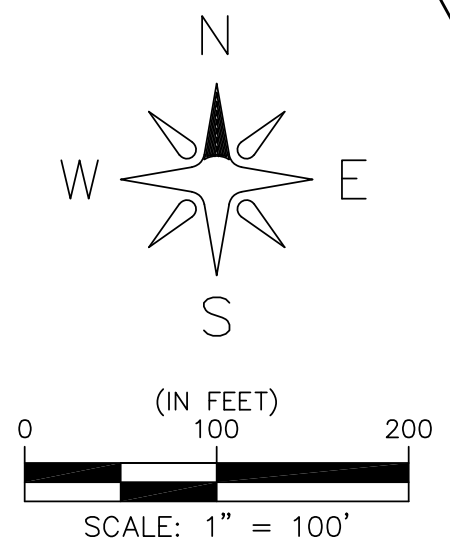
BLOCKS 4 TO 9, INCLUSIVE, AND BLOCKS 11 AND 12, PLAT OF STANLEY'S FIRST ADDITION TO BLAINE, ACCORDING TO THE PLAT THEREOF, RECORDED IN VOLUME 2 OF PLATS, PAGE 81, RECORDS OF WHATCOM COUNTY, WASHINGTON, EXCEPTING THEREFROM THAT PORTION PLATTED AS VISTA TERRACE, ACCORDING TO THE PLAT THEREOF, RECORDED IN VOLUME 8 OF PLATS, PAGE 51, RECORDS OF WHATCOM COUNTY, ALSO TOGETHER WITH THE NORTH 101 FEET OF LOTS 1 TO 6, BLOCK 10, PLAT OF STANLEY'S FIRST ADDITION TO BLAINE, ACCORDING TO THE PLAT THERE, RECORDED IN VOLUME 2 OF PLATS, PAGE 81, ALSO TOGETHER WITH THE SOUTH 180 FEET OF THE WEST 10 FEET OF VACATED STANLEY STREET ABUTTING AND TOGETHER WITH ALL VACATED STREETS AND ALLEYS ABUTTING SAID BLOCKS AS WOULD ATTACH BY OPERATION OF LAW PURSUANT TO COMMISSIONERS PROCEEDINGS FILED IN VOLUME 40, PAGE 391.

BASIS OF BEARINGS

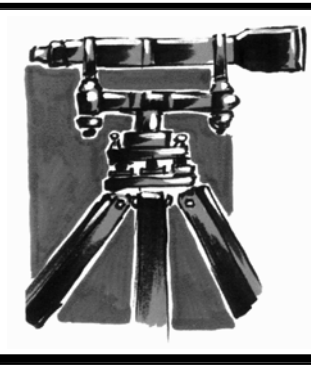
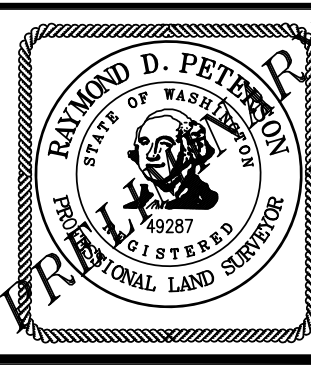
XX

LEGEND:

- FOUND BRASS DISK
- FOUND IRON PIPE
- FOUND REBAR & CAP
- SET REBAR & CAP, LS "49287"
- SANITARY SEWER MANHOLE
- SANITARY SEWER CLEANOUT
- CATCH BASIN
- WATER MANHOLE
- WATER VALVE
- WATER METER
- FIRE HYDRANT
- WATER LINE WARNING SIGN
- POWER VAULT
- POWER TRANSFORMER
- POWER METER
- COMMUNICATION RISER BOX
- COMMUNICATION VAULT
- UTILITY POLE
- STREET SIGN
- MAIL BOX
- POST OR BOLLARD
- DECIDUOUS TREE
- CONIFER TREE
- S— SANITARY SEWER LINE
- D— STORM LINE
- O— STORM CULVERT
- W— WATER LINE
- G— GAS LINE
- P— UNDERGROUND POWER LINE
- P— OVERHEAD POWER LINE
- T— UNDERGROUND TELEPHONE LINE
- T— OVERHEAD TELEPHONE LINE
- FO— FIBER OPTIC LINE
- D— DITCH LINE
- X— FENCE LINE



NO.	REVISION	BY	DATE



LDES, INC.
 5160 INDUSTRIAL PL. #108
 FERNDALE, WA 98248
 PHONE 360-383-0620
 FAX 360-383-0639

PROJECT #: 2116
 DATE: 8/31/2021
 DESIGNED BY: —
 DRAWN BY: SLG
 CHECKED BY: RDP

SKEERS CONSTRUCTION
 1249 BIRCH FALLS DRIVE
 BELLINGHAM, WA 98229

EXISTING CONDITIONS
"H" STREET PLAT
 A PORTION OF THE SE 1/4 OF THE SW 1/4 OF SECTION 32, TOWNSHIP 41 N., RANGE 1 E., W.M. CITY OF BLAINE, WHATCOM COUNTY, WASHINGTON