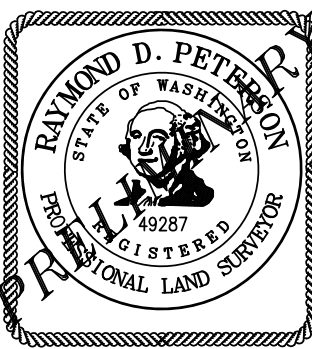




LDES, INC.
5160 INDUSTRIAL PL.
1108
PERDUE, WA 98248
PHONE: (360) 383-0620
FAX: (360) 383-0639



JOB NO.: 2116
DATE: 8/31/2021
DESIGNED BY: -
DRAWN BY: SLG
CHECKED BY: RDP
OWNER: HOLLINGER FAMILY PROPERTIES, LLC

A PORTION OF THE SE 1/4 OF THE SW 1/4 OF SECTION 32, TOWNSHIP 41 N., RANGE 1 E., W.M. CITY OF BLAINE, WHATCOM COUNTY, WASHINGTON

"H" STREET PLAT
PRELIMINARY PLAT

NO.	REVISION	BY	DATE

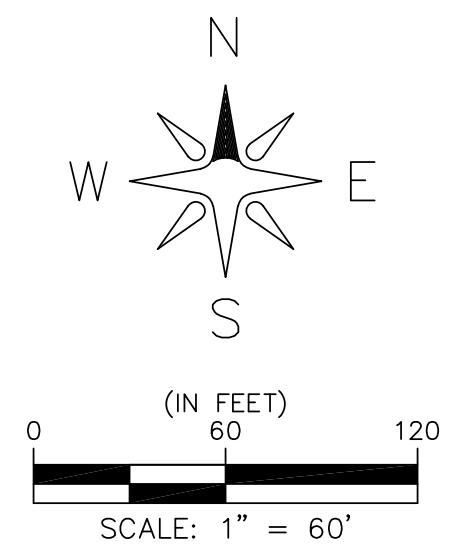
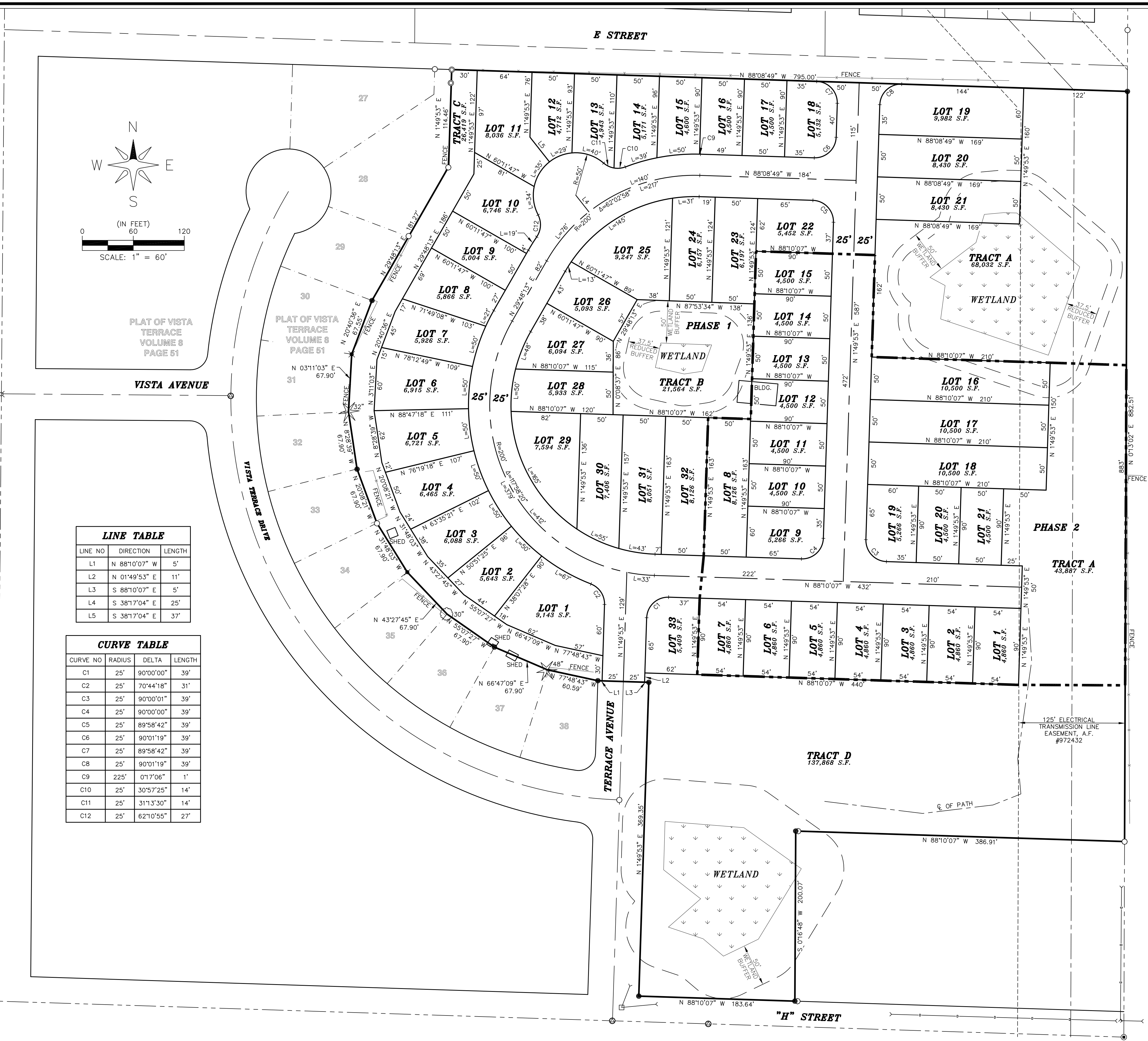
SHEET

01

OF

01

R:\Common\Land Projects\2021\2116 H STREET PLAT.dwg PLOT DATE: 8/31/2021 1:29 PM



LINE TABLE

LINE NO.	DIRECTION	LENGTH
L1	N 88°10'07" W	5'
L2	N 01°49'53" E	11'
L3	S 88°10'07" E	5'
L4	S 38°17'04" E	25'
L5	S 38°17'04" E	37'

CURVE TABLE

CURVE NO.	RADIUS	DELTA	LENGTH
C1	25'	90°00'00"	39'
C2	25'	70°44'18"	31'
C3	25'	90°00'01"	39'
C4	25'	90°00'00"	39'
C5	25'	89°58'42"	39'
C6	25'	90°01'19"	39'
C7	25'	89°58'42"	39'
C8	25'	90°01'19"	39'
C9	225'	0°17'06"	1'
C10	25'	30°57'25"	14'
C11	25'	31°13'30"	14'
C12	25'	62°10'55"	27'